



Changing Pattern of Urban Growth in Hyderabad city: A Study

Dr. Kethori Venkatesh, Dr T Anuradha, M.Kamraju

Lecturer, Assistant Professor, Research Scholar

Department of Geography

Nizam College, OU-CS, CESS

Hyderabad

Abstract

The evolution, growth and development of any city is the sum total of a series of processes that have been operative in that area over a period of time. The problems created by the haphazard and unrestricted growth of a city give rise to problems like unhygienic slums, polluted environment, uncoordinated development of residential, industrial, and commercial areas resulting in traffic bottle necks and many other problems all known and felt by the residents of the city. A particular process leads to a particular pattern. In turn the process itself is dependent on several factors like, the history of the region, its site and situation, social customs, population, planning laws, administration and so on and so forth. The Spatial growth of the city has been looked at from the land use point of view. Land use is the product of Ecological balance of various parameters existing over any space. Utilization or usage of land keeps changing based on the actions of mankind, the physical aspect 'Land' and cultural aspect 'Use' go hand in hand to frame 'Land use' and its study involves principles, factors, classification, techniques, conservation, reforms and planning. Hyderabad is one of the leading metropolitan cities of India. The city has under gone considerable socio cultural change in the past. Today also it is undergoing rapid and dynamic changes due to accelerated phase of Industrialization and urbanization. These changes had a deep impact on the pattern and developmental trends in the city.

Keywords: development, uncoordinated, administration, parameters, metropolitan

Introduction

Hyderabad is the fifth largest city in India with a population of about 5.7 million (following closely behind Bangalore) as per the 2001 census. The growth of the city has occurred at a much faster rate in the peripheries in the last couple of decades than in the metropolitan core. Accordingly, a number of new activities are emerging in the periphery with the active participation of both the state and the private sector. These trends have significant implications on land use, urban planning and policies in the coming years. The city has acquired a national and international image since mid



1990s with the growth of information technology and efforts by the state government to promote the same. A number of scientific institutes and industrial establishments of national and international importance was set-up in the city in the 1960s and 1970s. Large stretches of land, sometimes far in excess of their requirements, were offered by successive state governments at subsidized rates in order to attract them. Many of these industries were labor-intensive and also created enormous scope for ancillary industries and informal employment. It was observed that ‘with this concentration of high order tertiary-quaternary functions, Hyderabad will continue to be both primate and parasitic, for it is linked more strongly with large urban centers outside the state than with settlements in its own region’ (Alam S.M., 1991)¹

Objective:

- To study and analyze the population growth trend within the city

Data sources

- The present study makes wide use of Satellite imageries and maps provided by various Government agencies. Data has been collected from secondary sources like the Census of India, Greater Hyderabad Municipal Corporation, HMDA. It will be analyzed in the appropriate contexts as cited above and represented with the help of GIS overages which will provide easy input for overlays, query, buffering etc.

Evolution of Hyderabad City

The city of Hyderabad was established in 1581 A.D. and completed 400 years of its existence. The city enjoyed a strategic geographical location which enabled better trade corridors connecting the seaport town of Machilipatnam. The topography and the climate, good rainfall and underground water facilitated good agricultural prospects. Muslim rulers contributed for its cultural, architectural and other heritage buildings.

“The City Improvement Board” was entrusted with developing new colonies, housing, road widening etc. By 1922 full-fledged and sufficient potable drinking water supply was commissioned. The telephone system was commissioned in the city by 1923 AD. Electricity to the common people

¹ Alam.S.M., 1991, ‘*Metropolitan Dominance Atrophies Rural urban Integration*’, IASSI Quarterly, 10(1), pp. 47 – 59.



was commissioned in the same year. New Industrial areas cropped up at Azamabad by 1930 AD. Next year in 1931 AD the Hyderabad Sewage System was completed. This triggered the life in the city to modern standards of living. The city has acquired a national and international image since mid 1990s with the growth of information technology and efforts by the state government to promote the same. The decadal growth of urban population of Hyderabad remained between 4 to 5 Lakhs between 1901 to 1931. Sudden surplus of above eleven Lakhs with a decadal growth of 58.4 percent and 52.5 percent was registered between 1931-51 respectively. This is attributed to the better administration, development of Industries, business, transport and infrastructure. The minus growth between 1911-21 was due to dreaded diseases of cholera, Plague, influenza, Malaria and other infectious diseases. Substantial growth of nine Lakhs or 41.6 percent between 1981-91 is reasoned for heavy migration within the state. Political changes over attracted Andhra migrant employees and entrepreneurs to settle in Hyderabad². This exodus was disrupted between 1991-2001 due to Telangana struggle. Hyderabad grew to a tune of 222 percent over five decades 1951-2001 with 25 lakh people being added to the city. By the end of the 19th century the beginning of 20th century the population of Hyderabad was slightly above four lakhs. A growth rate of 4 per cent was noted between 1901-11. The following decade brought heavy miseries to the city with River Musi floods and dreaded diseases aftermath.

Table 1: Hyderabad: Growth of Population

Year	Population	% Growth Rate
1881	354962	--
1891	415039	16.92
1901	448466	8.05
1911	502104	11.96
1921	405630	- 19.21
1931	466894	13.13
1941	739159	58.31
1951	110688	52.97
1961	1249151	10.48
1971	1796339	43.81
1981	2545836	41.72
1991	4344437	70.65
2001	5751780	32.39
2011	6809970	87.2

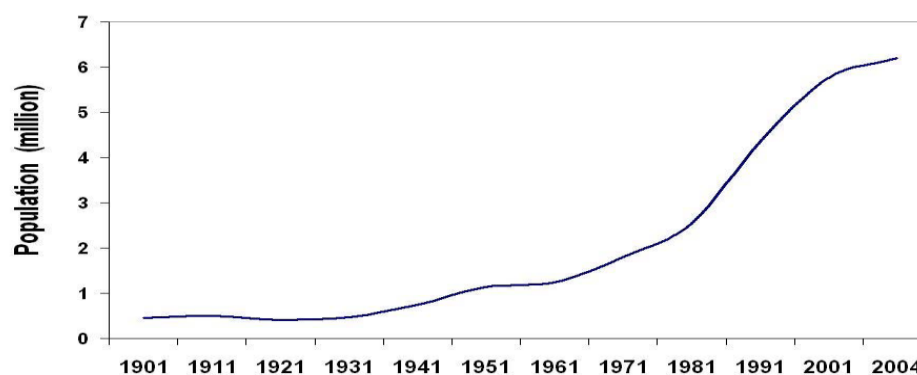
Source: Census of India Reports.

² Ahmed, Akbar S. (2002-11-01). *Discovering Islam: Making Sense of Muslim History and Society*. Routledge. ISBN 9781134495429



This brought down the city population considerably. The city registered a 13 per cent growth by census 1931. But a significant and overwhelmingly 60 per cent growth of the city population for the next two decades due to industrialization, construction changed the morphology of Hyderabad. Huge spatial extension especially the North and North East of Hyderabad developed substantially. Decade 1951-1961 has shown the least growth of only ten per cent³. This is attributed to post independence, partition, heavy exodus of Muslims to Pakistan. The growth of Population over the next two decades 1961-1971 was a substantial above forty per cent increase due to the strong, administrative, industrial and economic base of Hyderabad. The City of Hyderabad registered a very high Seventy per cent growth between 1981-1991⁴. This is due to the State policies of liberation, privatization, Technological expansion and a strong infrastructure, health, education. However, the last decade shows less than half growth of the preceding decade. The population growth analysis for 1981-91 showed a decadal increase of 57%. The MCH area had 42 %. But the surrounding Municipalities registered a very high increase of 155%. This indicates that the urban sprawl of the city exceeded several fold in area and population. It is also noticed that population of two of the municipalities grew by 200%, three of them grew of 170% another two by 140% and yet another two by 100%. This urban trend signifies the potential of the city peripheries for attracting and sustaining a high population. Malkajgiri, Uppal and Alwal Municipalities experienced a decline in population. This suggests that the south and south west of the city is expanding tremendously. This is attributed International Airport at Shamshabad in the South and Hi-tech city in the West.

Fig 1: Growth of Population in Hyderabad Urban Agglomeration



³ <http://worldpopulationreview.com/world-cities/hyderabad-population/>

⁴ <http://www.census2011.co.in/census/city/392-hyderabad.html>

Table 2. Past and Present & Future Trend of Growth of Population

S.No.	Component	Area	Population in Lakhs						Density of Population Sq. km.		
			1981	1991	2001	2005	2011	2021	2001-05	2011	2021
1	MCH	172	21.0	30.5	36.3	39.1	43.3	51.7	21048	25116	29977
2	Surrounding Municipalities	419	3.8	9.9	17.0	21.8	28.9	50.9	4102	6926	12151
3	Others	187	2.3	3.2	4.0	4.4	5.0	6.3	2147	2692	3391
4	HUA	778	27.1	43.6	57.5	65.4	77.2	108.9	7393	9923	13997
5	HUDA	1905	29.9	48.7	63.8	74.5	90.5	136.4	3351	4753	7162

It is observed that since 1981, the surrounding municipal population showed a tremendous growth of 158 percent in 1981-91. Overall the city has 6.52 Lakhs households with a density of 3776 households per Km².

Fig 2. Hyderabad City: Density of Population, 1991

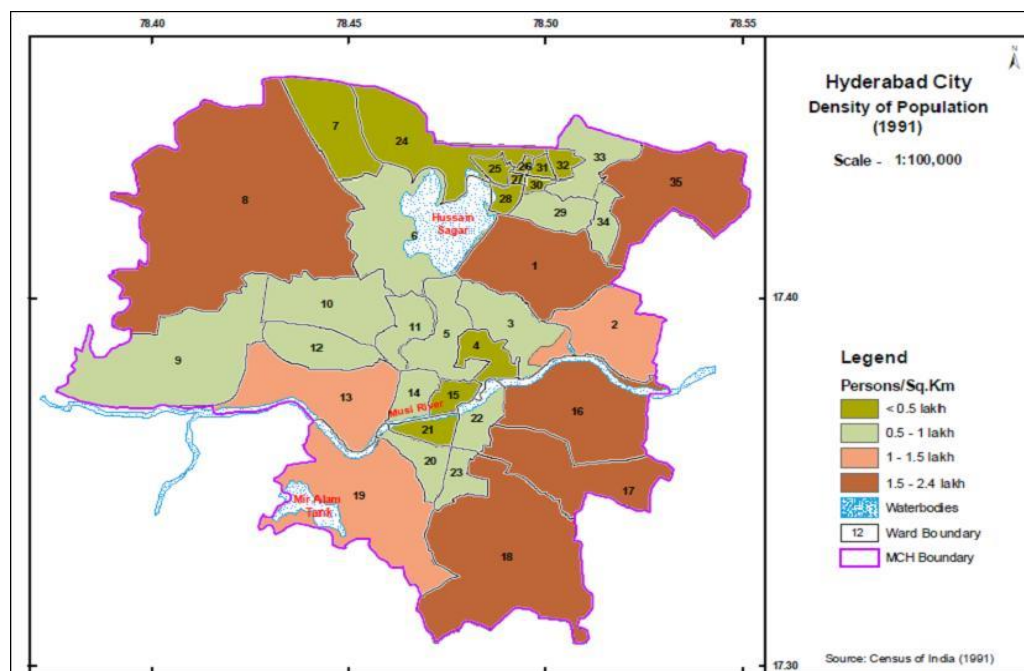


Fig 3. Hyderabad City: Density of Population, 2001

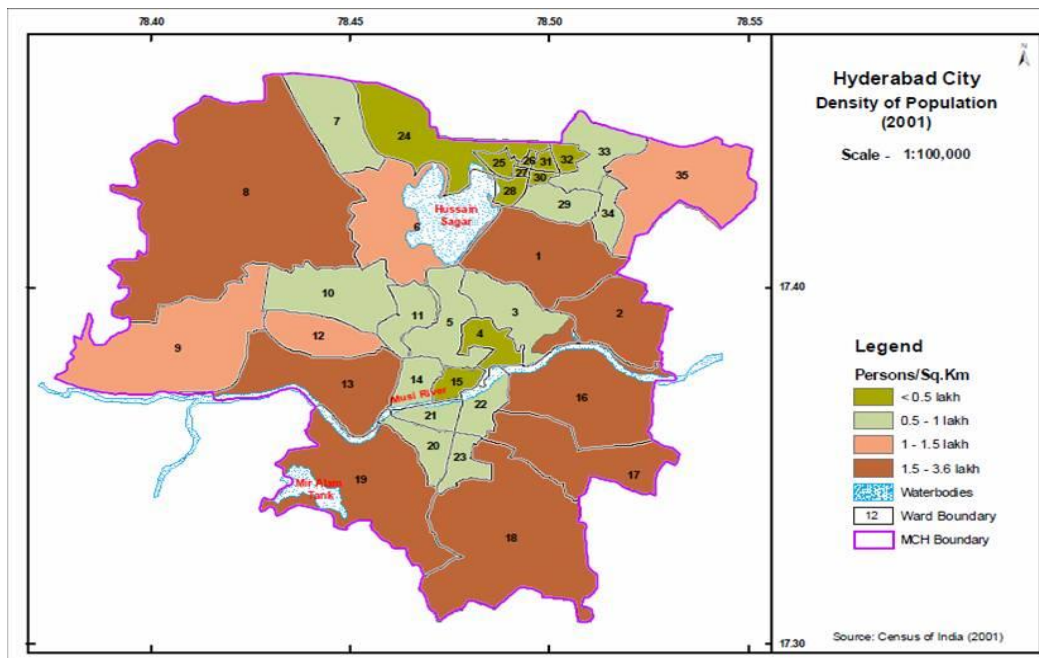
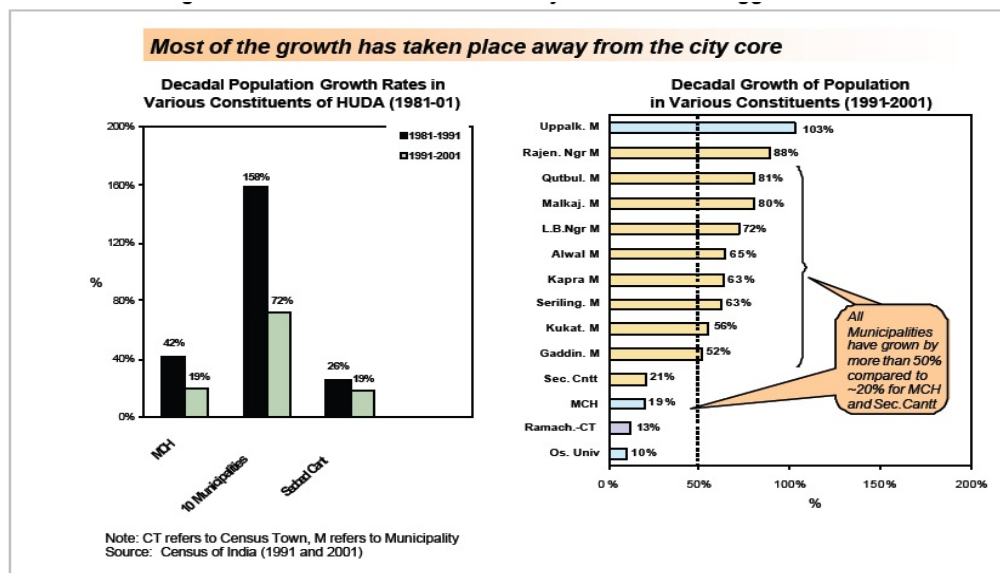


Fig 4. Hyderabad City: Decadal Population growth, 1981-2001



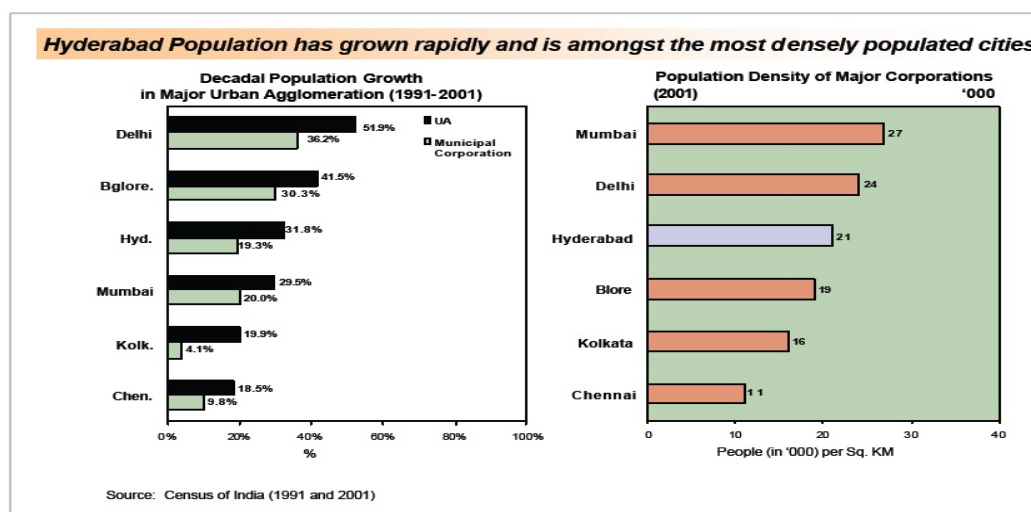
Consequent to the growth of population, the density in urban areas increased from 2500 in 1901 to 18,199 persons / km² in 2001. The city center or MCH area has a density of over 21,000 person / km² (2001), while the rest of the region within HUA or HUDA has lesser concentration of population. For instance, in the municipalities surrounding Hyderabad the density is 4100 persons /

km² and in the OU area it is only 1324 person's km². Hence concentration of population in the urban core has caused excessive stress on civic amenities.

The population of Hyderabad is a cross cultural Telugus and settlers from various parts of the country. People from north Indian states migrate here as the city is an emerging IT hub and the centre of scientific and technological development in the country. Youths from neighboring states such as Maharashtra, Orissa, Tamil Nadu and Karnataka make a beeline for Hyderabad in search of better employment opportunities and educational institutions. The cosmopolitan culture in the city promotes such an influx.⁵

The 2001 census pegged Hyderabad's population at 3686460 of which the male population accounts for 1894990 and the females account for 1791470 members of the population. The census also recorded the population density at 16988 per square kilometer. 79.04 % of the populace was recorded to be literate

Fig 5. Hyderabad City: Decadal Population growth, 1991-2001



The growth of Hyderabad can be conveniently divided in to the following periods.

1. **The Qutubshahi stage:** In this stage the city's concentration was mainly in the western direction. On or around, the fortress town of Golconda and it had its business centre in the

⁵ <http://ceoworld.biz/2016/12/02/indias-top-12-tech-cities-digital-indian-cities-survey-2016/>



Karwan area. Karwan is situated on the route which connects Hyderabad with the port town of Masulipatnam, during the period; this part was the main business district⁶.

2. **The early Asifjahi period.** During this period Lad Bazar, Pathergatti, Charminar, Isamia Bazar, Beggum Bazar, Koti, developed as business centres⁷.
3. **The second stage** of development of city. A feature of this stage is that the Residency and areas surrounding the (King koti) developed as business centres.
4. **The Railway Stage:** With the advent of the Railway, new areas sprung up as business centres in the vicinity of the railway stations like Nampally, Kachiguda etc.. to cater to the needs of passengers.
5. **The metropolitan stage:** Abids including Koti, Nampally, Osmangunj, Mozamjahi market, Basheerbagh, Tilak road together developed as the Central Business District of Hyderabad. The historical city of Hyderabad is today a commercial hub of activity and has various shopping centres spread throughout its area.

A close look at the statistics would reveal that the population in Hyderabad was 3.6 million in the year 2001. This has grown to become more than 4.0 million by 2009. The rise in the number of people residing in the city has catapulted it among the most populated Indian cities. According to estimates, if the population in the metropolitan area is also taken into account, it will be around 6.3 million.

Table 4: Trends in growth of constituents of HUA and HUDA regions

Components of HUA / HUDA	Area (km ²)	Population (million)		
		1981	1991	2001
MCH	172.6	2.15	3.04	3.63
10 Municipalities	418.58	0.38	0.99	1.71
Secunderabad Cantonment	40.17	0.13	0.17	0.20
Osmania University & 13 Outgrowth, 5 Census Towns	146.82	0.09	0.15	0.19
Total of HUA region	778.17	2.76	4.36	5.75
Medchal, Gandipet, Panchayat Areas,	1273.69	0.22	0.30	0.63

⁶ Bosworth, Clifford Edmund (2007). *Historic cities of the Islamic World*. BRILL. p. 164. ISBN 9789004153882.

⁷ "Historical Events of Hyderabad". Hyderabad planet. Retrieved



Ghatkesar Census Town, etc.				
Total HUDA Region (incl. Secunderabad Cantonment)	1905.04	2.99	4.66	6.38

A primary factor fuelling this growth in HUA is the increase in population by a rate of 3.98 % annually (1951 – 2001). While Rangareddy grew at 3.79 %, the districts of Hyderabad Urban, Mahabubnagar, Medak and Nalgonda grew by 2.8, 2.4, 2.1 and 1.64 % respectively. In all likelihood this trend would continue and it is estimated that HUA region would have a total population of 7.64 million by 2010, 10.84 by 2020 and 15.37 million by 2030. In HUA region alone density of population would continue to increase immensely at the present rate of growth.

Consequent to the growth of population, the density in urban areas increased from 2500 in 1901 to 18199 persons per sq. kms in 2001. The city centre has a density of over 21000 persons, while the rest of the regions have lesser concentration of population per sq. kms. The erstwhile municipalities surrounding Hyderabad the density is 4100 persons and in the ou area it is only 1324 persons. Hence concentration of population in the urban core has caused excessive stress on the civic amenities.

Table 5. HYDERABAD: Area - Population - 1881 – 2001

Year	Area in Sq. Kms	Total Population (in Lakhs)	Density People Sq. Km	Male Population %	Female Population %	Sex Ratio Females/ Males	Total Literates %		
1881	57.2	3.54	6189	51.14	48.86	995			
1891	57.2	4.15	7255	NA	NA	NA			
1901	57.2	4.48	7832	51.79	48.21	931			
1911	130	5.02	3861	51.62	48.38	937			
1921	132.6	4.06	3062	51.65	48.35	936			
1931	139.3	4.67	3353	52.99	47.01	887			
1941	204.2	7.39	3619	52.09	47.91	920			
1951	216.6	11.31	5222	50.25	49.75	990	72	46.4	26.6



1961	221.2	12.49	5646	51.49	48.51	942	47.8	30.3	17.5
1971	298.5	17.96	6017	51.87	48.13	928	53.2	32.6	20.6
1981	298.5	25.46	8529	51.79	48.21	931	57.9	34.2	23.7
1991	298.5	43.44	14553	52.15	47.85	917	56.9	33.64	23.93
2001	418.8	57.52	13734				78.51		

Hyderabad Urban Agglomeration's (HUA's) population is likely to increase from 5.7 million in 2001 to 7.72 million by 2011 and 10.89 million by 2021, which explains the expensive wish list. The total population of Hyderabad was recorded to be about 6,255,256 (2007) and hence the population density of the city has been ascertained at 14,192 per square kilometer. The decrease can be attributed to the increasing city limits. The population count in 1950 was 1122000 and the city is estimated to be laden with 10457000 dwellers by 2015⁸. The Municipal Corporation of Hyderabad (MCH) constitutes 23 wards of Hyderabad and 12 wards of Secunderabad. The State Government in 1960 established a single corporation for Hyderabad covering the areas of Twin Cities, including old city, with a view to improve economy and efficiency in the municipal administration. In order to substantiate population growth past and future for the various components of Hyderabad is given in the following table

Table 6. Past and Present & Future Trend of Growth of Population

S.No.	Component	Area	Population in Lakhs						Density of Population Sq. km.		
			1981	1991	2001	2005	2011	2021	2001-05	2011	2021
1	MCH	172	21.0	30.5	36.3	39.1	43.3	51.7	21048	25116	29977
2	Surrounding Municipalities	419	3.8	9.9	17.0	21.8	28.9	50.9	4102	6926	12151
3	Others	187	2.3	3.2	4.0	4.4	5.0	6.3	2147	2692	3391
4	HUA	778	27.1	43.6	57.5	65.4	77.2	108.9	7393	9923	13997
5	HUDA	1905	29.9	48.7	63.8	74.5	90.5	136.4	3351	4753	7162

⁸ Singh, Sarwant. "Urbanisation: From Mega-Cities, Mega-Regions, Mega-Corridors and Mega-Slums to Mega Opportunities." *New Mega Trends*, 2012, pp. 61–80., doi:10.1057/9781137008091_5.



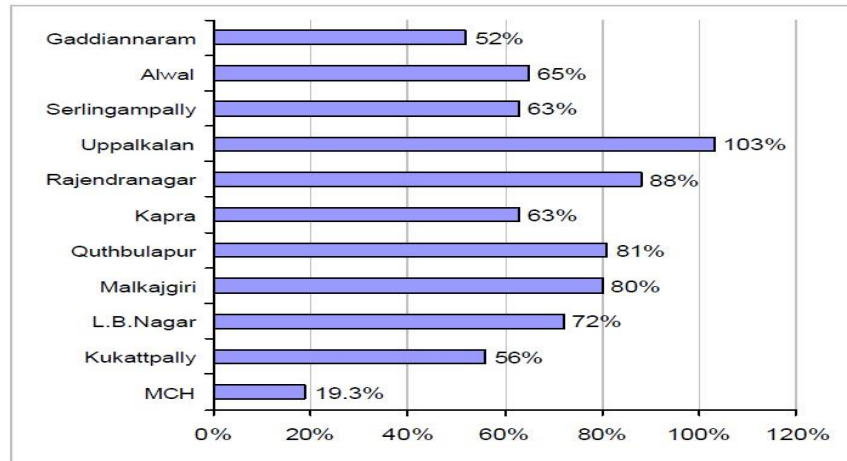
The MCH was divided into two divisions' viz., Hyderabad and Secunderabad. The corporation was divided into 35 wards. Out of which 13 wards from Hyderabad were from old city jurisdiction. Four of them viz., 20, 32, 22 & 23 remained intact form about 400 years. The important duties of the municipal corporation include providing the city with essential civic services, amenities and facilities and also to maintain and monitor their functioning. The civic amenities including Roads, Street Lights, Parks, Playgrounds and Libraries, the Health Services including the Sanitation, Solid waste Management activities. The other major role of the MCH is to provide drinking water supply to all the localities of the city. The town group concept of 1961 did not tackle efficiently the growing needs of the city. Both as for administration and execution, the concept failed to deliver and finalize proper civic duties of the city, besides the growing challenges of the suburbs, the urban sprawl and the growth of urban fringe did not come under the preview of the town group. The spatial contiguity of urban-rural was not properly addressed. The emergence of satellite towns lacked proper ways and means of executing and providing civic facilities. Decentralization of Administration and Execution of civic works of MCH, which shouldered the distribution of drinking water supply to the city since 1932. Likewise the street lighting responsibility was transferred to State Electricity Board. City Planning was entrusted to HUDA in 1975 and MCH retained civic services like maintenance of public roads, sanitation, disposal of solid waste and to plan improve the slums and to restrict their growth and chalk out new plans to bring change in the face uplift of slums in particular and the city in general. The metropolitan area of Hyderabad notified under A.P. Urban (Dev.) act 1975 and termed as "Development Area". This includes the MCH controlled 10 municipalities and a vast area under gram panchayats. Two master plans and zonal development plans were prepared. The Government approved one master plan and 18 zonal development plans notified by law for execution.

Table 7: Decadal Growth of Surrounding Municipalities 1991-2001

S.No.	Municipality	% Growth of Population
1	Uppal	103
2	Rajendernagar	88
3	Qutubullapur	81
4	Malkajgiri	72
5	L.B. Nagar	65
6	Alwal	63
7	Seri Lingampally	63

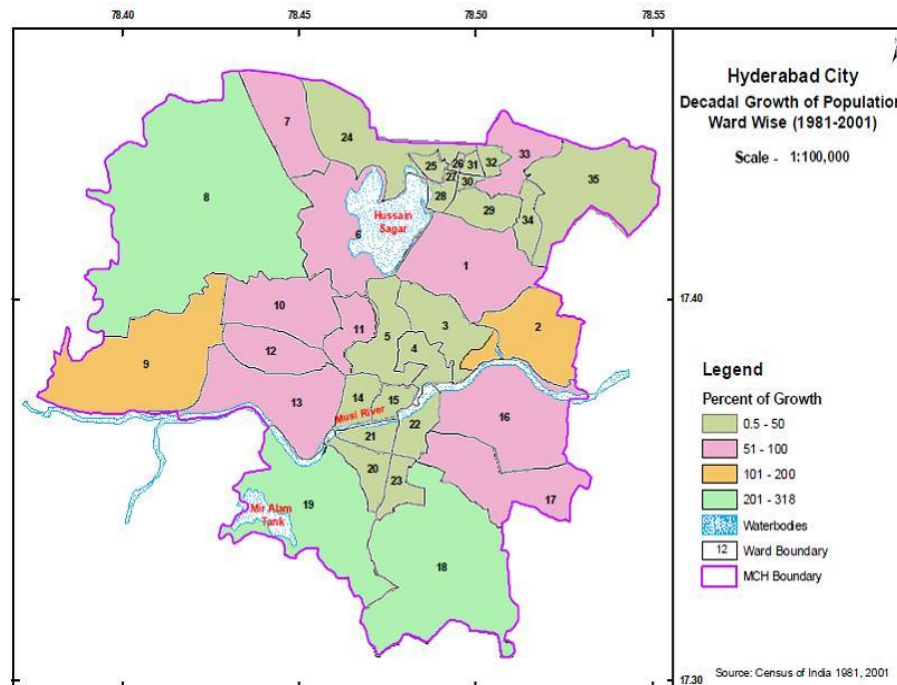
8	Kukatpally	56
9	Gaddianaram	52
10	MCH	19.3

Fig: 6. Growth of Surrounding Municipalities 1991-2001



24

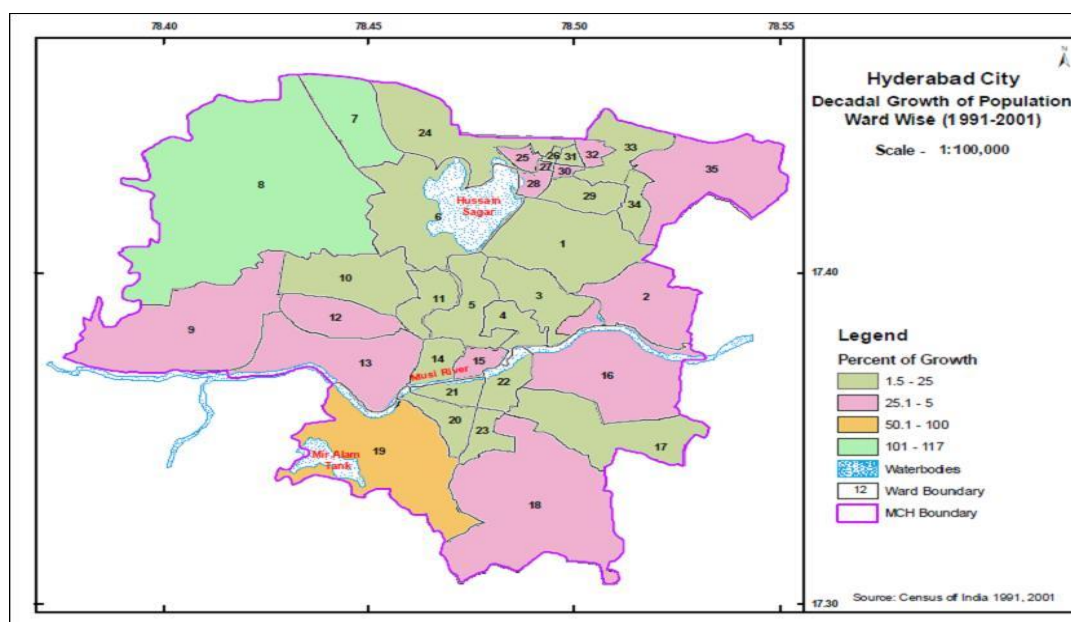
Fig 7: Hyderabad City: Decadal Growth of Population- Ward Wise, 1981-01



The territorial jurisdiction of HUDA covered with an area of 1,348 sq. kms. Covering entire Hyderabad district, parts of Rangareddy and Medak districts. About 173 sq. kms of area covered Hyderabad Municipal Corporation. The 10 municipalities had an area of 416 sq. ksm and the 10 gram panchayats with 1273 sq. mtrs was under HUDA.

HUDA and MCH realized their inability to concentrate exclusively the growing civic and socio-economic issues of old city. In 1981 QQSUDA (Quli Qutib Shah Urban Development Authority) was carved in the old city⁹. This comprised of 13 wards including the 4 oldest of the walled city (20, 32, 22 & 23). The total area was 6 sq. kms. Hyderabad recorded a substantial population increase during 1961-1971 with a growing rate of 43.81% which was more than threefold increase to its preceding year, Further the decade 1971-1981 also recorded a heavy growth rate of 41.72% with a population figure of 25,45,836 people. These two decades the city gained a substantial growth of population of nearly 4.3 lakhs. The distribution of population found to be gained in the urban fringe and periphery. This triggered the urban administration to innovate new ways and means to tackle new issues and challenges being encountered the city.

Fig 8: Hyderabad City: Decadal Growth of Population- Ward Wise, 1991-01



⁹ "FOR WHOM IS THIS DEVELOPMENT AUTHORITY?" *The Hindu*, 19 Dec. 2012, www.thehindu.com/todays-paper/tp-features/tp-downtown/for-whom-is-this-development-authority/article4219368.ece.



The cropping challenges of urbanization and metropolitan challenges were Hyderabad was reeling could not be addressed with any new forms of concepts. Noting is boosted in combating or controlling the growing spatial extent and population. The “City Improvement Board” agency initiated its activity first by clearing slums opening of new residential areas, planning of new roads through piece-meal way. The agencies forecasting another flood confined its interest alongside River Musi. The areas along the river banks were converted to parks and playground.

During the year 2008, half of the population living in towns and cities.

Table 9: Hyderabad Agglomeration: Growth of Population

Semi decadal – 1950-2015

Year	Population	% Growth
1950	1122000	---
1955	1181000	5.26
1960	1243000	5.25
1965	1462000	17.62
1970	1749000	19.63
1975	2086300	19.27
1980	2487000	19.50
1985	3210000	29.10
1990	4193000	30.62
1995	4893000	15.07
2000	5445000	12.85
2005	6146000	12.90
2010	6812000	10.84
2015	7513000	10.30

Source: UN – 2001

Growth of Population

The Hyderabad Urban Agglomeration (HUA) is divided into 4 components to study its demography. (1) MCH, (2) Ten Municipalities, (3) Secunderabad Cantonment and (4) Osmania University Campus, thirteen outgrowths and four census towns. A large amount of 418.58 Sq. Kms. (53.8%) is covered by 10 Municipalities and constitutes for about thirty per cent of the city population with more than 400 people per Sq. Km Density. The Decade-wise population distribution and growth for over a century is presented to elicit the trend and profile urban growth of Population of Hyderabad.



HUA extends to over 778.17 sq. km and is spread diagonally for 36 km from northwest to southeast and over 35 km in northeast - southwest direction. It is fifth fastest growing city in India and is currently home to over 6 million persons. Hyderabad Urban District came into existence in August 1978 consequent on formation of a new district -Rangareddy- consisting of rural areas of Hyderabad. In 1995, Hyderabad Urban Development Authority (HUDA) was constituted with a jurisdiction of over 1864 km².

The decadal growth of Urban Population of Hyderabad remained between 4 to 5 lakhs between 1901 to 1931. Sudden surplus of above eleven lakhs with a decadal growth of 58.4% and 52.5% was registered between 1931 – 51 respectively. This is attributed to the better administration, development of Industries, business, transport and infrastructure. The minus growth between 1911-21 was due to dreaded disease of cholera. Plague, influenza, Malaria and other infectious diseases.

Table 8: Area, Population Density Hyderabad Agglomeration

S. No.	Components	Area in Sq. Kms	Area	Popula-tion	Popula-tion	Density Per Sq. Km
1.	MCH	172.6	22.18	3632586	63.15	21046
2.	10 Municipalities	418.56	53.79	1717617	29.86	4103
3.	Secunderabad Cantonment	40.17	5.16	207258	3.61	5160
4.	Osmania University + 13 Outgrowth + 4 Census Towns HUA	146.82	18.87	194319	3.38	1324
Total		778.17	100.00	5751780	100.00	7391

Source: Vision 2020

Table 9. Components of Population Growth (Hyderabad Urban Area)

Composition/ Year	Population Increase during			
	1981-1991 (in Lakhs)	Percent of total	1991-2001 (in Lakhs)	Percent of total
Natural Increase	8.7	59	9.0	70
Immigration	3.7	25	3.1	24
Jurisdictional Change	2.4	16	0.8	6
Total Change	14.8	100	12.9	100

The population growth analysis for 1981-91 showed a decadal increase of 57%. The MCH area had 42 %. But the surrounding Municipalities registered a very high increase of 155 percent.



This indicates that the urban sprawl of the city exceeded several fold in area and population. It is also noticed that population of two of the municipalities grew by 200%, three of them grew of 170 percent another two by 140% and yet another two by 100%. This urban trend signifies the potential of the city peripheries for attracting and sustaining a high population. Malkajgiri, Uppal and Alwal Municipalities experienced a decline in population. This suggests that the south and south west of the city is expanding tremendously. This is attributed International Airport at Shamshabad in the South and Hi-tech city in the West.

A primary factor fuelling this growth in HUA is the increase in population by a rate of 3.98 % annually (1951 – 2001). While Rangareddy grew at 3.79 %, the districts of Hyderabad Urban, Mahabubnagar, Medak and Nalgonda grew by 2.8, 2.4, 2.1 and 1.64 % respectively. In all likelihood this trend would continue and it is estimated that HUA region would have a total population of 7.64 million by 2010, 10.84 by 2020 and 15.37 million by 2030. In HUA region alone density of population would continue to increase immensely at the present rate of growth.

Table 10: Population growth in Hyderabad Urban Agglomeration

District / Region	Population (million)	Estimated Population (million)		
		2010	2020	2030
	2001			
Hyderabad	3.63	4.80	6.26	8.15
Rangareddy	3.57	4.46	6.19	8.59
Mahabubnagar	3.51	4.49	5.59	6.95
Medak	2.67	3.21	3.90	4.74
Nalgonda	3.25	3.72	4.38	5.15
HUA	5.75	7.64	10.84	15.38

Substantial growth of nine lakhs or 41.6% between 1981-91 is resaved for heavy migration within the state. Political changes over attracted Andhra migrant employees and entrepreneurs to settle in Hyderabad. This exodus was disrupted between 1991-2001 due to Telangana sentiment and political struggle by the locals. Andhras were discouraged and their own cities have up surged and attracted the people to develop their own regional base. Hence, Vijayawada, Vishakhapatnam, Guntur, Kakinada cities were developed. These attracted quality education, real estate, good infrastructure, and other developmental states. Hyderabad grew to a tune of 222% over five decades 1951-2001 with 25 lakh people being added to the city.



It is to be noted that substantial increase of population found settled in the 12 neighboring municipalities of the core city i.e., Municipal Corporation of Hyderabad (MCH). The above analysis is restricted to the core or MCH only. The 2001 census has shown the MCH population of 36.3 lakhs but the Hyderabad Urban agglomeration HUDA had a population of 57.52 lakh.

Future Growth

The rates of growth of population experienced by Hyderabad Urban Agglomeration during 1991 and 2001 will continue in future though at a lesser rate. The projections indicate that the metropolitan area would house a population of 90.55 lakhs in 2011 and 136.44 lakhs in 2021 including the population of the city.

Population growth characteristics of Hyderabad Urban Agglomeration are evaluated by looking at the past growth trends. The projections indicate that the city will have a population of about 4 million in 2006, 4.5 million 2011 and expected to cross the 5 million mark in 2021. The outer municipalities are growing at a faster pace than that of the Municipal Corporation. Accordingly, the forecasts for 2011 and 2021 indicate that the population is expected to be in the range of 29 lakhs and 51 lakhs respectively.

An analysis of composition of population growth indicates that natural growth contributed about 60 percent while migration contributed 25 percent in the year 1991. However, the contribution of natural growth has increased significantly in the year 2001 to 67 percent. This indicates that the urban growth in HUA will take place even if measures are taken to control migration. Hence long term and strategic planning is necessary to promote equitable economic growth and service delivery. Table 2.4 gives the details on composition of population growth.

As indicated earlier, most of the growth in HUA is occurring in the surrounding municipalities ranging from 56% to 103%, whereas the population growth in MCH area is only 19.3%. All Municipalities have grown by more than 50% compared to MCH and Secunderabad Cantonment. The city of Hyderabad has undergone considerable political and socio cultural change in the past. Today also it is undergoing rapid and dynamic changes due to accelerated phase of Industrialization and urbanization. These changes had a deep impact on the pattern and developmental trends in the city. The primary attribute of urban growth is population growth. Hyderabad Urban Development Authority (HUDA) as originally in 1975, consists of the following



three main components. The Municipal Corporation of Hyderabad (MCH) consists of 172.60 Sq.KM areas, the 10 surrounding Municipalities 418.58 Sq. km area and the 125 Gram Panchayats 1273.60 Sq.km together constitutes total extent of HUDA area 1864.87. Sq. Km. In legal terms this area was notified as the Hyderabad Urban Development Authority (HUDA). In recent times certain changes took place because of the creation of special Area development Authorities like the Cyberabad Development Authority. But for overall and long term metropolitan planning purpose the above break up continues to cover the dimensions of a single metropolitan area¹⁰.

Increasing Growth Rate

Growth in non-core areas is driven by residential settlements and the industrial growth has been hampered by expensive real estate. Residential growth is creating demand for service delivery /infrastructure development in the surrounding municipalities. The fundamental reason for growth was the closeness to Hyderabad and proximity to employment. One of the key reasons for inadequate service delivery outcomes in Hyderabad Urban Agglomeration is the overlapping arrangement in functions, roles and responsibilities of the institutions resulting in poor accountability. The absence of an effective coordination mechanism, amongst municipal, metropolitan and state level agencies has implications for orderly spatial development, coordinated infrastructure provision, local economic growth, development management, service delivery and expenditure effectiveness. There is an urgent need to ensure spatial and functional integration of service delivery process through innovative institutional arrangements for achieving better service outcomes. There is a need for widespread reform in governance and service delivery framework with a focus on metropolitan integration and co-ordination.

The Greater Hyderabad Municipal Corporation was divided into five (5) zones (South, East, North, West and Central Zones), 18 circles and 150 wards. Each ward would cover about 37000 population. There are about 1908849 Households in these 5 zones.

The urban agglomeration radiating out of Hyderabad is spread over an area of 778.17 sq.kms and comprises Hyderabad, and twelve other municipal entities surrounding it. Hyderabad perched on

¹⁰ HUDA (2003): "A Plan for Sustainable Development: Hyderabad 2020". Draft Master Plan for Hyderabad Metropolitan area, Hyderabad Urban Development Authority, Hyderabad



the top of the Deccan plateau, 1776 ft above the mean sea level. The Hyderabad Metropolitan Area is larger than Hyderabad Urban Agglomeration and covers an area of 1905 sq. km.

Hyderabad lies on the convergence of national and state highways and trunk, air and rail routes, which link it with other metropolitan centres and key centres of importance in the country. The well-developed national and regional rail-road network crisscrossing the city improved the access of Hyderabad to a number of key growth centers within and outside the state. Hyderabad has excellent domestic and international air link to the major metros of India and important international destinations. The emergence of new economy industries has catapulted Hyderabad to a prime position in India. The setting of Fab City and other new economy industries and the upcoming international airport would place Hyderabad as a regional hub in this part of the world.

In a fast globalizing world, it is essential for Hyderabad to offer world-class services to attract global investments. The global companies consider not only the investment climate and economic potential of cities while making investment and location decisions but also the quality of services offered by cities. In this context, it is imperative that Hyderabad has not only a good investment climate, but also world-class services comparable to other cities. However, the city is experiencing a severe strain on its infrastructure, due to rapid urbanization, unplanned growth besides industrial development¹¹. The city is deficient in service delivery and trails other Indian metropolitan cities on most service delivery outcomes. Hyderabad has the lowest rating in terms of parameters like GDP, literacy rate, dropout rate, child mortality rate, sewerage, transportation etc. but yet there is potential for growth as Hyderabad is establishing itself as a technology hub through initiation of various reforms.

Density of population

The MCH core city of Hyderabad had high density of people rather its surrounding municipalities. The scope of vast open area facilities even people of MCH area to shift into suburbs for various reasons. The fastest growing zones area the suburbs of Hyderabad especially and south and south West.

¹¹ Manzoor Alam and Waheeduddin Khan (1972) : Metropolitan Hyderabad and its region : A Strategy for Development, Asia Publishing House, Bombay, pp135.



Table: 10: Hyderabad: density of population, 1981-2001

Year	Area in Sq. mts.	Population in lakhs	Density sq.mts.
1981	172.6	21.5	12457
1991	172.6	28.3	16394
2001	172.6	36.1	20929

Source: Census of India.

Dense packing is witnessed in the Secunderabad, parts of the city where the land man ratio is very high. Some of the wards have a density ranging between 6 lakhs to one million. Density of population tends to portray a gradient pattern which mimics distance decay.

It is noteworthy to find that there is no change in the jurisdiction area of MCH and non-MCH municipalities since 1981. Obviously the core city shall be denser than the periphery with its old houses, morphology and infrastructure. Topography, climate, availability of water land is in plenty; this is a definite boost for over spilling of the metropolis. Since 1981 the surrounding municipal population showed a tremendous growth of 158% in 1981-91. However, the next decade it came down to 71.08%. This is still 4 times faster than the population growth of MCH area.

Conclusion

Hyderabad with its varied historical background has continuously been growing in every sense of word – from a princely state in 16th century it has acquired a mega city status in the current century. With almost over four and half centuries of past, Hyderabad had its own administrative arrangements. The present study area of Municipal Corporation of Hyderabad (MCH) has around 172.6 Sq.Kms of area spanning over 23 wards of Hyderabad and 12 wards of Secunderabad. A historical past linked with regional and national levels had transformed the city of Andhra Pradesh into one of the vibrant urban economies of the global order. The continuously changing status of civic administration often has had to combat with providing essential basic amenities and services to the residents. Hyderabad grew to a tune of 222 percent over five decades of 1951 -2001. As per 2001 Census, MCH has a population of 36.3 Lakhs but Hyderabad Urban Agglomeration (HUA) with other additional suburban municipalities showed a population of 57.52 Lakhs. The ward wise distribution of population too depicts varied nature with a higher concentration of population towards the North Eastern part of Hussain Sagar. South and North of MCH separated by River Musi showing distinctive characters in family size, sex ratio, child population, child sex ratio, marginal and total



Jai Maa Saraswati Gyandayini

An International Multidisciplinary e-Journal

(Peer Reviewed, Open Accessed & Indexed)

Web: www.jmsjournals.in Email: jmsjournals.in@gmail.com

ISSN: 2454-8367

Vol. 3, Issue-III
Jan. 2018

Impact Factor : 4.032 (IJIF)

UGC Approved e-Journal No. - 43919

e-ISJN: A4372-3118

workers, SC and ST population. The Southern portion show relatively higher values. However, this is in complete contrast to literate population, which shows a reversal of trends to that of earlier one. On the whole, it can be concluded that the demographic component of MCH reflects the strongly imbued Socio-economic and religious background of the people of the region.
